

2-in-1 LED Dimmer – Wireless Ready

Model # DIM2IN1-RF-WR

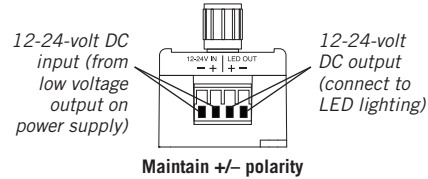
- Provides full range brightness control of low voltage white LED lighting.
- Use dimmer alone or with Armacost Lighting's optional designer-style wireless touchpad dimmer for remote 2-way lighting control.

- Unique convertible design installs directly into standard switch box or surface mounts anywhere for easy, precise control of your LED lighting.
- Works with 12-volt DC and 24-volt DC LED lighting.
- Dimming will save energy and extend LED life.

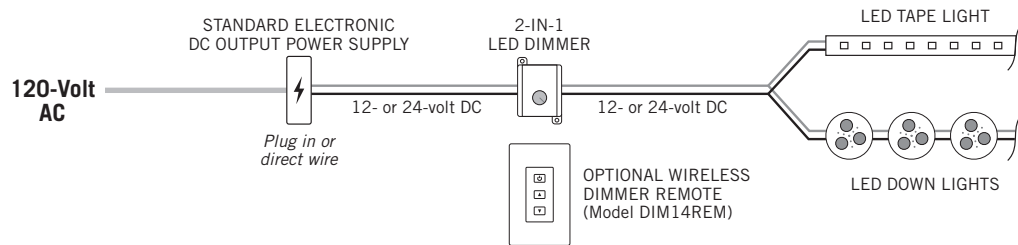
INSTALLATION GUIDELINES

- For use only with 12-volt DC or 24-volt DC low voltage single color LED lighting. **Do not connect this device to 120-volt AC current.** For dry location use. If used outdoors, unit must be installed inside wet location rated electrical box enclosure.
- Do not connect more than one dimmer to a power supply in the same circuit. Doing so will cause the LED lights to flicker.
- Use only with 12-volt or 24-volt DC constant voltage standard electronic power supplies. Not compatible with magnetic power supplies or low voltage power supplies with 12-volt AC output.
- Suitable for RV and boat interior applications (dry location), this device can be direct wired and powered by an on-board 12- or 24-volt battery.
- Do not exceed 96 watts of lighting when used with 12-volt LEDs or 192 watts when used with 24-volt LEDs.
- All wiring must be in accordance with national and local electrical codes, low voltage Class 2 circuit. If you are unclear as to how to install and wire this product, contact a qualified electrician.

- Be sure to maintain polarity (+ to +, – to –). Failure to observe polarity or shorting of wires may damage the dimmer.

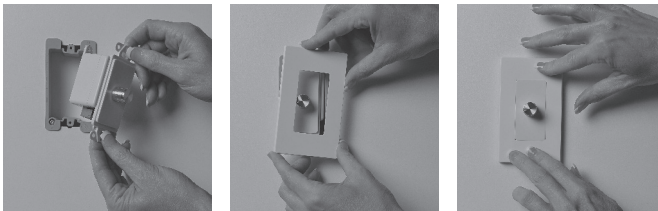


- Use only insulated staples or plastic ties to secure cords and wires.
- Route and secure wires so they will not be pinched or damaged.
- For wire runs inside of walls, use certified CL2 or better cabling and appropriate mounting hardware.
- Do not install Class 2 low voltage wiring in the same runs as AC main power. If AC and low voltage wires cross, keep them at 90-degree angles.



Easily surface mounts using screw down tabs.

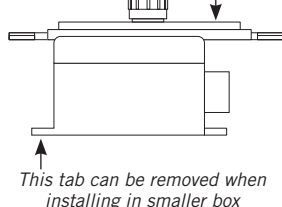
Or install in wall using supplied insert plate.



To convert dimmer for in-wall installation

Carefully remove rotary knob and install insert plate on top of dimmer as shown. Secure with washer and hex nut. Dimmer can now be mounted into standard switch box. Finish by installing designer-style switch cover plate (sold separately at most home improvement stores).

Installation tips:

- When dimmer is installed in smaller electrical boxes, create more space for wires by removing top mounting tab. 
- Remove quick connect terminal block for easier wire routing. Route wires with terminal block then snap terminal block back into dimmer. Observe the polarity printed on the dimmer case and maintain same sequence on terminal block while securing wires.

For better LED brightness, keep voltage drop to a minimum

Voltage drop is a natural occurrence in all low voltage lighting systems. It is the gradual decrease in voltage that occurs from your power supply to your LED lighting. Voltage drop only becomes undesirable if you notice the brightness in one area of your lighting is objectionably different than another area. As a practical approach to installing LED lights, test your lighting prior to final installation. If voltage drop appears to be a concern, use shorter lengths of DC power feed wires or switch to a thicker gauge wire (lower AWG number).

For an online voltage drop calculator, visit armacostlighting.com/installation.

SPECIFICATIONS

| | |
|--|---------------------------|
| Input voltage..... | 12- or 24-volt DC |
| Output current..... | .8A |
| Max load with 12-volt DC lighting..... | 96 watts |
| Max load with 24-volt DC lighting..... | 192 watts |
| Working temperature..... | -5 to 120°F (-20 to 49°C) |
| Country of origin..... | China |

Limited 1-year warranty. Improper installation, improper powering, abuse, or failure to use this device for its intended purpose will void warranty. Proof of purchase is required for all returns. Questions? Email support@armacostlighting.com.

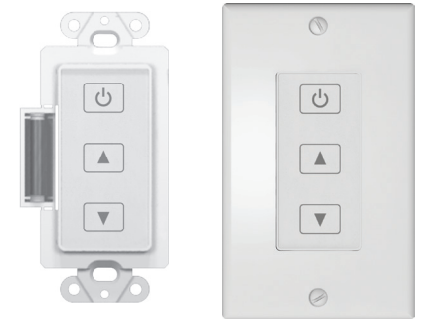


Conforms to UL Standard 8750

OPTIONAL ACCESSORY

Wireless Touchpad

(Model No. DIM14REM)

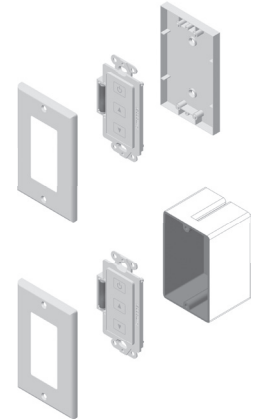


Designer-style switch plate and all mounting screws included.

- Beautifully blends with existing designer switches and dimming décor.
- Provides full range dimming – works up to 100 feet away through walls and doors.
- Convenient 2-way lighting control – works in unison with your existing dimmer.
- RF pairing technology offers ease of expandability without having to run extra wiring
- Can control multiple 2-in-1 LED dimmers with a single touchpad. Touchpads can also be paired with dimmers to control lighting zones in the same area without interference.
- Compatible only with the Wireless Ready dimmer (Model DIM2IN1-RF-WR)

Surface mount

Easily mount to any wall or flat surface, no hole required.



Install in wall

Can be installed in wall in an electrical box.



To buy online, or to learn more, visit armacostlighting.com/dimmers